



## Protect your vision.

Bringing the most advanced technology to our patients, we recommend **optomap**<sup>®</sup> ultra-wide digital retinal imaging as part of your comprehensive eye exam today.

The **optomap** ultra-wide digital retinal imaging system helps you and your optometrist make informed decisions about your eye health and overall well-being. Combining your optometrist's expertise and **optomap** technology, **optomap** brings your eye exam to life.

### What is your retina?

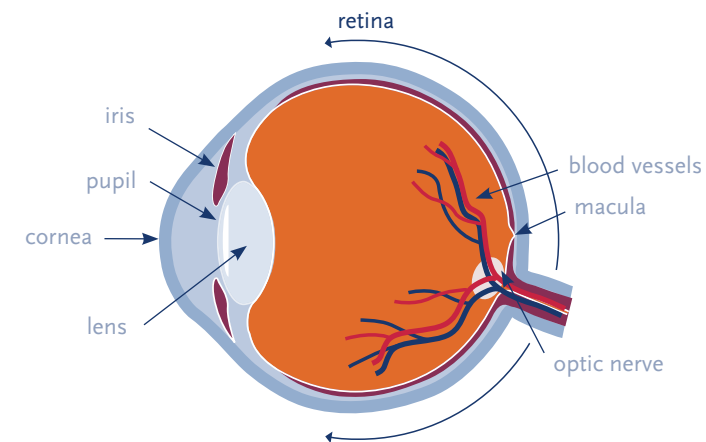
The retina is a delicate lining at the back of the eye similar to film in a camera.

Light strikes the retina through the lens in your eye and produces a picture which is then sent to the brain, enabling you to see.

### Why is a healthy retina important?

An unhealthy retina cannot send clear signals to your brain which can result in impaired vision or blindness. Most retinal conditions and other diseases can be treated successfully with early detection.

Although you may see clearly, a comprehensive eye exam is essential to check the health of your retinas. The retina has no nerve endings so you may not feel any pain and therefore be unaware of a potential problem.



The Human Eye

## Your eyes are a window to your health.

Take a closer look with **optomap**.



[optomap.com](http://optomap.com)

© 2013 Optos. All rights reserved. Optos, optos and **optomap** are registered trademarks of Optos plc. Registered in Scotland Number: SC139953 Registered Office: Queensferry House, Carnegie Campus, Dunfermline, Fife KY11 8GR, UK

GM00001/2



## Early detection is vital.

### What can happen to the retina?

Your retina is the only place in the body where blood vessels can be seen directly. This means, in addition to eye conditions, signs of other diseases (for example, stroke, heart disease, hypertension and diabetes) can be seen in the retina. Early detection is essential so treatments can be administered.

### Diabetic Retinopathy (DR).

Diabetes affects the eyes and the kidneys and is a leading cause of blindness. Retinopathy occurs when diabetes damages the tiny blood vessels inside the retina.

### Age-related Macular Degeneration (AMD).

The centre of the retina (the macula) can become diseased as we get older. This results in alterations to our fine central vision making daily activities such as driving and reading difficult.

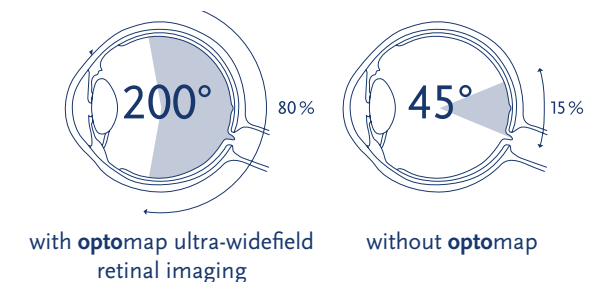
### Glaucoma (Increased Eye Pressure).

Glaucoma causes damage to the optic nerve and almost always develops without symptoms.

### Hypertension (High Blood Pressure).

Increased pressure can result in changes to blood vessels in the eye, increasing the risk of cardiovascular disease (stroke or heart disease).

## PIONEERING TECHNOLOGY



### How does your optometrist normally examine the retina?

Examining the retina is challenging. Your optometrist looks through your pupil to examine the back of your eye. Traditional viewing methods can be effective, but difficult to perform and are carried out manually without any digital record.

### How does the optomap help?

The optomap ultra-wide digital retinal imaging system captures more than 80% of your retina in one panoramic image. Traditional methods typically reveal only 10-15% of your retina at one time.

The unique optomap ultra-wide view enhances your optometrist's ability to detect even the earliest signs of disease that appear on your retina. Seeing most of the retina at once allows your optometrist more time to review your images and educate you about your eye health. Numerous clinical studies have demonstrated the power of optomap as a diagnostic tool<sup>1</sup>.



### Do all optometrists have an optomap ultra-wide digital retinal imaging system?

Not yet, optomap is a standard of care for evaluating eye health at this practice and millions of people worldwide have benefited from optomap.

### How often should I have an optomap?

Your optometrist will advise you based on your individual circumstances, but the general recommendation is that you have an optomap every time you have an eye exam. This will ensure you have a digital record of your retinal health on file which can be compared for changes over time.

### Should my children have an optomap too?

Many vision problems begin at an early age, so it's important for children to receive proper eye care from the time they are infants.

### Will I need to be dilated and does it hurt?

An optomap takes only seconds to perform, is not painful, and typically does not require dilation. However, your optometrist may decide dilation is still needed.

**More than 39 million optomaps have been performed worldwide since 2000.**

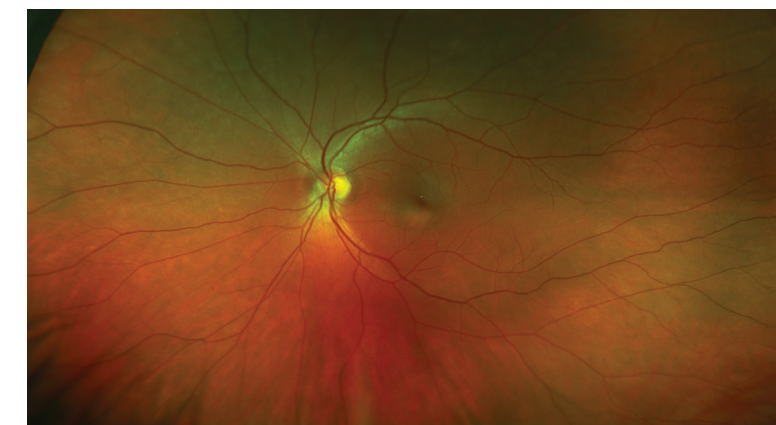
## An important method for evaluating eye health.

### How was optomap invented?

“In 1990 my five year old son Leif Anderson went blind in one eye because a retinal detachment was detected too late for treatment. Although he was having regular eye exams, conventional tests were uncomfortable, especially for a small child. I sought to find a way to make retinal examinations easier. Leif, now a young man, has adjusted beautifully and we are thankful to, hopefully, help other families avoid vision loss.”

—Douglas Anderson, Optos founder

optomap ultra-wide digital retinal image of a healthy eye



1. Data on file

# Helping you maintain healthy eyes.

 **optomap**<sup>®</sup>  
ultra-wide digital retinal imaging